



CorePro LEDlinear MV

CorePro LED linear R7S 118mm 6.5-60W 830

CorePro R7S is a retrofit replacement for traditional double-ended linear R7S lamps. Its 'light all around' design delivers light just like a halogen lamp. Within the range you can choose dimmable products which have deep dimming function that enables a cozy ambience when using a dimmable fixture.

Product data

General Information		Starting Time (Nom)	
Cap-Base	R7S [R7s]		0.5 s
EU RoHS compliant	Yes	Warm Up Time to 60% Light (Nom)	0.5 s
Nominal Lifetime (Nom)	20000 h	Power Factor (Nom)	0.5
Switching Cycle	50000X	Voltage (Nom)	220-240 V
Technical Type	6.5-60W		
Light Technical		Temperature	
Color Code	830 [CCT of 3000K]	T-Case Maximum (Nom)	70 °C
Beam Angle (Nom)	300 °		
Luminous Flux (Nom)	806 lm	Controls and Dimming	
Color Designation	White (WH)	Dimmable	No
Correlated Color Temperature (Nom)	3000 K	Mechanical and Housing	
Luminous Efficacy (rated) (Nom)	124 lm/W	Bulb Finish	Clear
Color Consistency	<6	Approval and Application	
Color Rendering Index (Nom)	80	Energy Efficiency Label (EEL)	A++
LLMF At End Of Nominal Lifetime (Nom)	70 %	Suitable For Accent Lighting	No
		Energy Consumption kWh/1000 h	7 kWh
Operating and Electrical		Product Data	
Input Frequency	50 to 60 Hz	Full product code	871869652253000
Power (Nom)	6.5 W	Order product name	CorePro LED linear R7S 118mm 6.5-60W 830
Lamp Current (Nom)	65 mA	EAN/UPC - Product	8718696522530
Wattage Equivalent	60 W		

CorePro LEDlinear MV

Order code	929001186102
Numerator - Quantity Per Pack	1
Numerator - Packs per outer box	10
Material Nr. (12NC)	929001186102

Net Weight (Piece)	0.050 kg
--------------------	----------

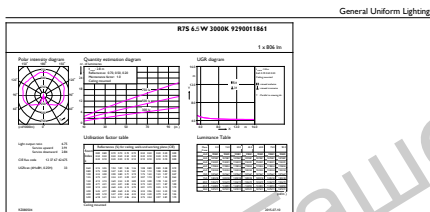
Dimensional drawing

C

Product	D	C
CorePro LED linear R7S 118mm 6.5-60W 830	22.5 mm	118 mm

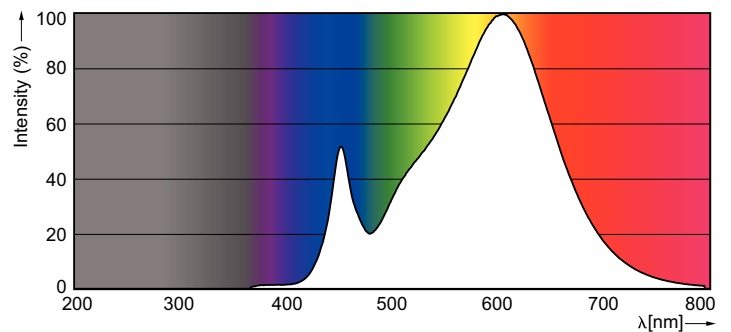
LED 6.5-60W 830 R7S

Photometric data



CircuLux Photometrics 4.5 Philips Lighting B.V. Page 1/1

LEDspot 6.5W R7S Clear 3000K 300D



SDPO_LEDspotM_0040-Spectral Power distribution